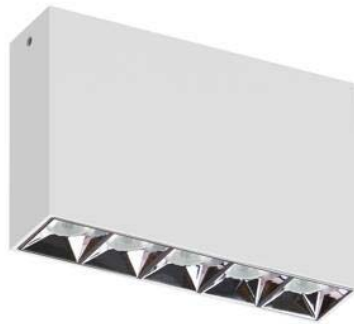


SL5C-9303010P-WB



Light Output Ratio:	100.0%	
Luminaire Power:	10.44 W	
SHR Nominal:	0.50	Calculated using the TM5
SHR Maximum:	0.50	fine grid method.

C Range: 0 - 360DEG
C Interval: 15.0DEG
Test Speed: HIGH
Temperature: 25.3DEG
Operators: Jason
Test Date: 2022-01-14

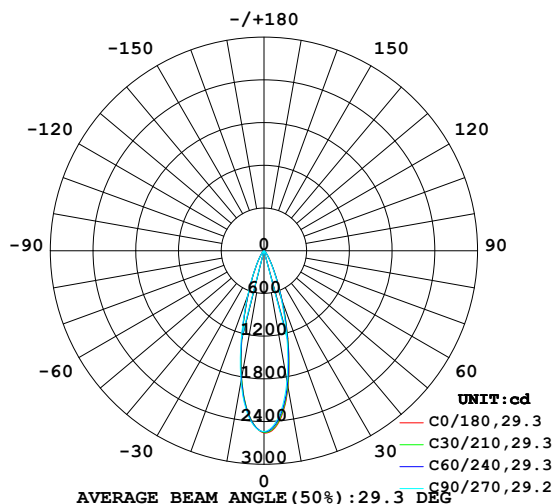
γ Range: 0 - 90DEG
 γ Interval: 0.5DEG
Test System: EVERFINE GO-2000B_V1 SYSTEM V2.0.362
Humidity: 58%
Test Distance: 8.967m [K=1.0000]
Remarks:

LUMINAIRE PHOTOMETRIC TEST REPORT

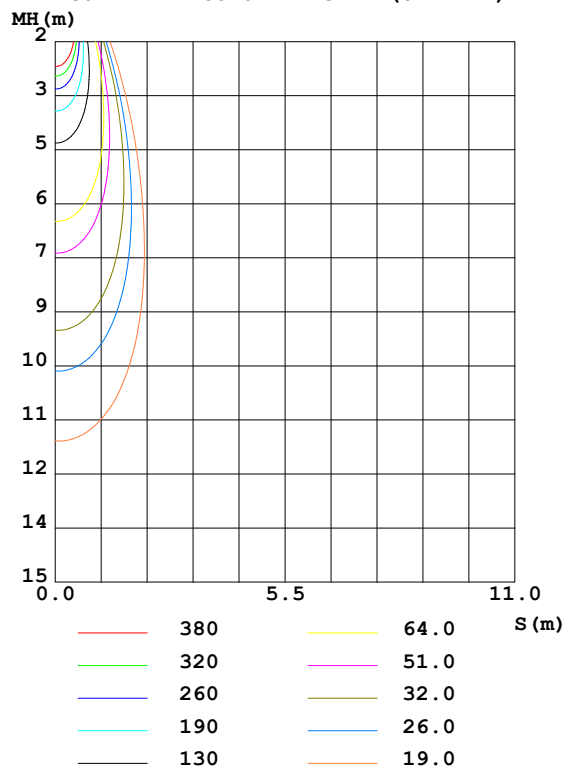
Test:U:220.8V I:0.0491A P:10.44W PF:0.9623 Freq:49.99Hz Lamp Flux:813.339x1 lm		
NAME: SL5C-9303010P-WB	TYPE:Downlight	SERIAL No.:
SPEC.:3000K	DIM.: ϕ 70mm*H150mm	
MFR.: NEKO LIGHTING AG		

DATA OF LAMP		PHOTOMETRIC DATA Eff: 77.90 lm/W			
MODEL	CREE-3000K	I _{max} (cd)	2560	S/MH (C0/180)	0.47
NOMINAL POWER (W)	10	LOR (%)	100.0	S/MH (C90/270)	0.49
RATED VOLTAGE (V)	15	TOTAL FLUX (lm)	813.34	η UP, DN (C0-180)	0.0, 50.9
NOMINAL FLUX (lm)	813.339	CIE CLASS	DIRECT	η UP, DN (C180-360)	0.0, 49.1
LAMPS INSIDE	1	η up (%)	0.0	CIBSE SHR NOM	0.50
TEST VOLTAGE (V)	14.07	η down (%)	100.0	CIBSE SHR MAX	0.50

LUMINOUS INTENSITY DISTRIBUTION DIAGRAM



C0 PLANE ISOLUX DIAGRAM (UNIT:lx)



C Range: 0 - 360DEG
C Interval: 15.0DEG
Test Speed: HIGH
Temperature:25.3DEG
Operators:Jason
Test Date:2022-01-14

γ Range: 0 - 90DEG
 γ Interval: 0.5DEG
Test System:EVERFINE GO-2000B_V1 SYSTEM V2.0.362
Humidity:58%
Test Distance:8.967m [K=1.0000]
Remarks:

ZONAL FLUX DIAGRAM

ZONAL FLUX DIAGRAM:

γ	C0	C45	C90	C135	C180	C225	C270	C315	γ	Φ zone	Φ total	%lum, lamp
10	1944	1929	1859	1817	1818	1804	1863	1897	0- 10	209.1	209.1	25.7,25.7
20	744.8	753.8	700.5	662.4	647.7	639.9	677.6	705.0	10- 20	334.4	543.4	66.8,66.8
30	198.1	202.8	186.3	179.3	169.7	168.7	173.5	185.0	20- 30	170.0	713.4	87.7,87.7
40	57.32	63.21	55.56	56.56	49.89	53.21	50.77	57.76	30- 40	64.13	777.6	95.6,95.6
50	18.00	21.39	17.96	18.50	15.88	17.34	16.13	19.31	40- 50	25.05	802.6	98.7,98.7
60	4.007	5.737	5.194	4.959	3.237	4.510	4.245	5.096	50- 60	8.999	811.6	99.8,99.8
70	0.0418	0.3321	0.0419	0.0310	0.0105	0.0425	0.0105	0.0908	60- 70	1.682	813.3	100,100
80	0.0209	0	0.0209	0.0052	0.0105	0.0105	0.0105	0.0157	70- 80	0.0165	813.3	100,100
90	0.0105	0	0.0105	0.0052	0.0105	0.0157	0.0105	0.0105	80- 90	0.0108	813.3	100,100
100									90-100			
110									100-110			
120									110-120			
130									120-130			
140									130-140			
150									140-150			
160									150-160			
170									160-170			
180									170-180			
DEG	LUMINOUS INTENSITY:cd									UNIT:lm		

Conical surface Flux(90deg): 793.03 lm

%lum = 97.5%

%lamp = 97.5%

Conical surface Flux(120deg): 811.63 lm

%lum = 99.8%

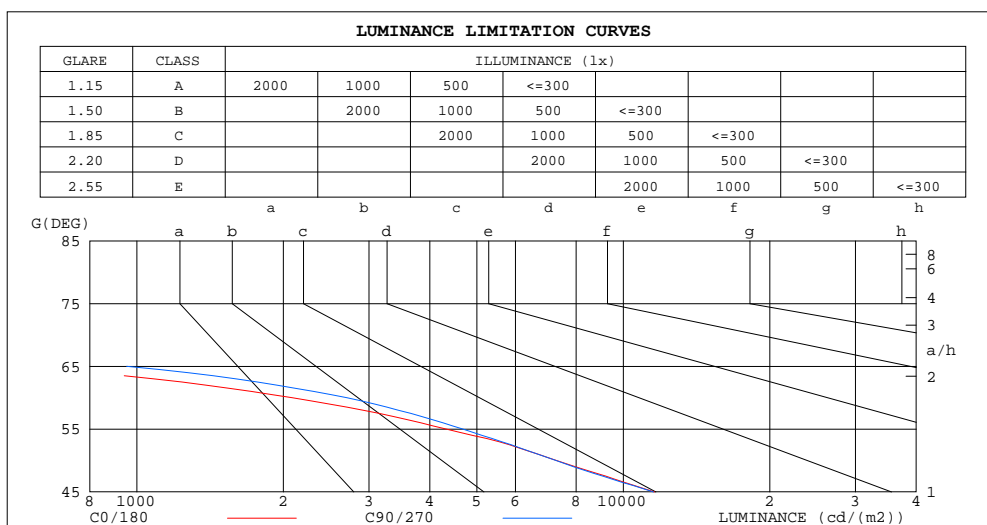
%lamp = 99.8%

C Range: 0 - 360DEG
C Interval: 15.0DEG
Test Speed: HIGH
Temperature:25.3DEG
Operators:Jason
Test Date:2022-01-14

γ Range: 0 - 90DEG
 γ Interval: 0.5DEG
Test System:EVERFINE GO-2000B_V1 SYSTEM V2.0.362
Humidity:58%
Test Distance:8.967m [K=1.0000]
Remarks:

LUMINANCE LIMITATION CURVES

Test:U:220.8V I:0.0491A P:10.44W PF:0.9623 Freq:49.99Hz Lamp Flux:813.339x1 lm		
NAME: SL5C-9303010P-WB	TYPE:Downlight	SERIAL No.:
SPEC.:3000K	DIM.: $\phi 70\text{mm} \times H150\text{mm}$	
MFR.: NEKO LIGHTING AG		



LUMINANCE cd/(m2)		
G(DEG)	C0/180	C90/270
85	47	47
80	31	31
75	32	26
70	32	32
65	486	953
60	2084	2701
55	4324	4678
50	7283	7263
45	11594	11530

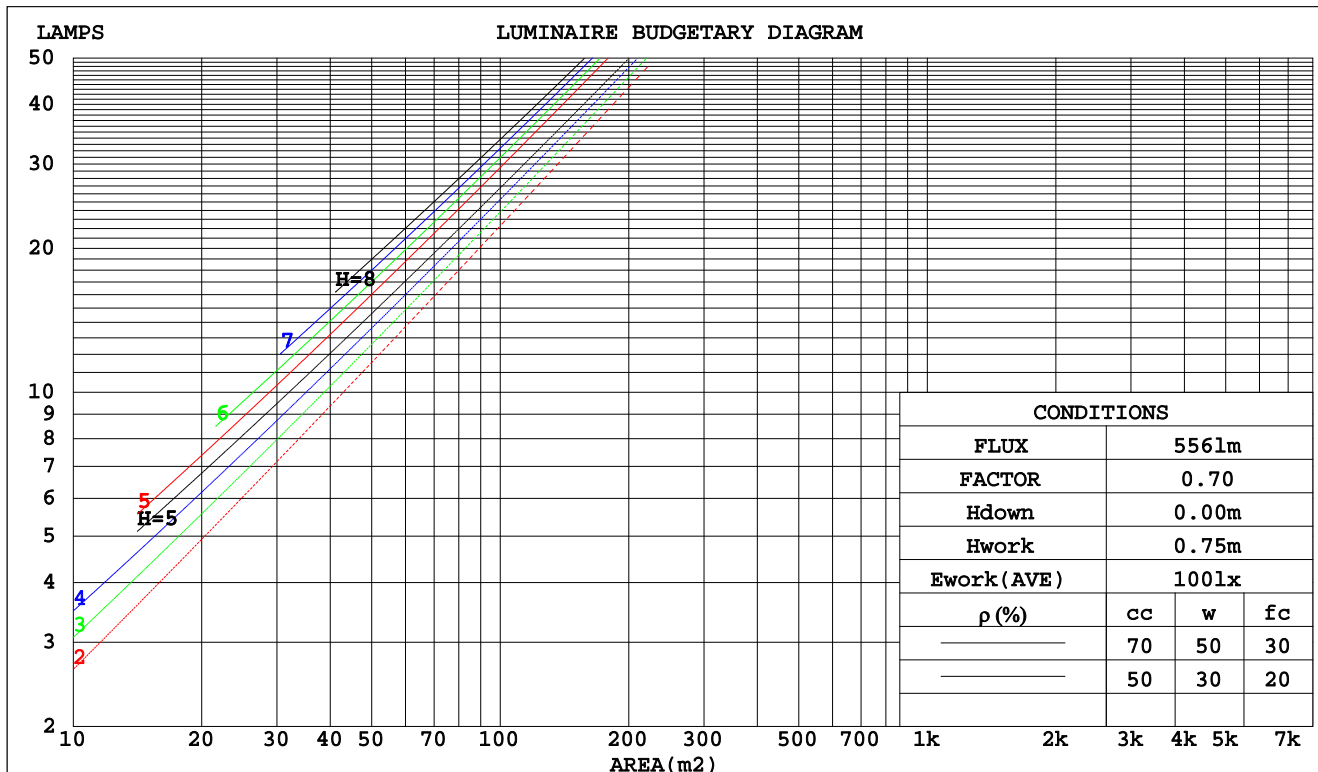
C Range: 0 - 360DEG
C Interval: 15.0DEG
Test Speed: HIGH
Temperature:25.3DEG
Operators:Jason
Test Date:2022-01-14

γ Range: 0 - 90DEG
 γ Interval: 0.5DEG
Test System:EVERFINE GO-2000B_V1 SYSTEM V2.0.362
Humidity:58%
Test Distance:8.967m [K=1.0000]
Remarks:

CU AND LUMINAIRE BUDGETARY ESTIMATE DIAGRAM

Test:U:220.8V I:0.0491A P:10.44W PF:0.9623 Freq:49.99Hz Lamp Flux:813.339x1 lm		
NAME: SL5C-9303010P-WB	TYPE:Downlight	SERIAL No.:
SPEC.:3000K	DIM.: ϕ 70mm*H150mm	
MFR.: NEKO LIGHTING AG		

pcc	80%			70%			50%			30%			10%			0
pw	50%	30%	10%	50%	30%	10%	50%	30%	10%	50%	30%	10%	50%	30%	10%	0
pfc	20%			20%			20%			20%			20%			0
RCR	Coefficients of Utilization(CU)															
0.0	1.19	1.19	1.19	1.16	1.16	1.16	1.11	1.11	1.11	1.06	1.06	1.06	1.02	1.02	1.02	.00
1.0	1.12	1.10	1.08	1.10	1.08	1.06	1.06	1.05	1.03	1.02	1.01	1.00	.99	.98	.97	.96
2.0	1.06	1.03	.00	1.04	1.01	.99	1.01	.99	.97	.98	.96	.95	.96	.94	.93	.91
3.0	1.01	.97	.93	.99	.96	.93	.97	.94	.91	.94	.92	.90	.92	.90	.88	.87
4.0	.96	.91	.88	.95	.91	.87	.93	.89	.86	.91	.88	.85	.89	.87	.84	.83
5.0	.91	.87	.83	.91	.86	.83	.89	.85	.82	.87	.84	.81	.86	.83	.81	.80
6.0	.87	.83	.79	.87	.82	.79	.85	.81	.79	.84	.81	.78	.83	.80	.78	.76
7.0	.84	.79	.76	.83	.79	.76	.82	.78	.75	.81	.77	.75	.80	.77	.74	.73
8.0	.81	.76	.73	.80	.76	.72	.79	.75	.72	.78	.75	.72	.77	.74	.72	.71
9.0	.78	.73	.70	.77	.73	.70	.76	.72	.69	.76	.72	.69	.75	.71	.69	.68
10.0	.75	.70	.67	.75	.70	.67	.74	.70	.67	.73	.69	.67	.72	.69	.67	.66



C Range: 0 - 360DEG
C Interval: 15.0DEG
Test Speed: HIGH
Temperature:25.3DEG
Operators:Jason
Test Date:2022-01-14

γ Range: 0 - 90DEG
 γ Interval: 0.5DEG
Test System:EVERFINE GO-2000B_V1 SYSTEM V2.0.362
Humidity:58%
Test Distance:8.967m [K=1.0000]
Remarks:

WEC AND CCEC

Test:U:220.8V I:0.0491A P:10.44W PF:0.9623 Freq:49.99Hz Lamp Flux:813.339x1 lm		
NAME: SL5C-9303010P-WB	TYPE:Downlight	SERIAL No.:
SPEC.:3000K	DIM.: ϕ 70mm*H150mm	
MFR.: NEKO LIGHTING AG		

ρ_{cc}	80%			70%			50%			30%			10%			0	
ρ_w	50%	30%	10%	50%	30%	10%	50%	30%	10%	50%	30%	10%	50%	30%	10%	0	
ρ_{fc}	20%			20%			20%			20%			20%			0	
RCR	RCR:Room Cavity Ratio						Wall Exitance Coefficients(WEC)										
0.0																	
1.0	.151	.086	.027	.144	.082	.026	.132	.076	.024	.120	.069	.022	.110	.064	.021		
2.0	.142	.078	.024	.137	.075	.023	.126	.070	.022	.117	.065	.020	.108	.061	.019		
3.0	.134	.071	.021	.129	.069	.021	.120	.065	.020	.112	.062	.019	.105	.058	.018		
4.0	.126	.066	.019	.122	.064	.019	.115	.061	.018	.108	.058	.018	.102	.055	.017		
5.0	.120	.061	.018	.116	.060	.017	.110	.057	.017	.104	.055	.016	.098	.053	.016		
6.0	.114	.057	.016	.111	.056	.016	.105	.054	.016	.100	.052	.015	.095	.050	.015		
7.0	.108	.054	.015	.106	.053	.015	.101	.051	.015	.096	.049	.014	.092	.048	.014		
8.0	.103	.051	.014	.101	.050	.014	.097	.048	.014	.093	.047	.014	.089	.046	.013		
9.0	.099	.048	.013	.097	.047	.013	.093	.046	.013	.090	.045	.013	.086	.044	.013		
10.0	.095	.046	.013	.093	.045	.013	.090	.044	.012	.087	.043	.012	.083	.042	.012		

ρ_{cc}	80%			70%			50%			30%			10%			0	
ρ_w	50%	30%	10%	50%	30%	10%	50%	30%	10%	50%	30%	10%	50%	30%	10%	0	
ρ_{fc}	20%			20%			20%			20%			20%			0	
RCR	RCR:Room Cavity Ratio						Ceiling Cavity Exitance Coefficients(CCEC)										
0.0	.190	.190	.190	.163	.163	.163	.111	.111	.111	.064	.064	.064	.020	.020	.020		
1.0	.169	.158	.147	.145	.135	.126	.099	.093	.087	.057	.054	.051	.018	.017	.016		
2.0	.152	.133	.116	.130	.114	.100	.089	.079	.070	.052	.046	.041	.017	.015	.013		
3.0	.138	.113	.094	.119	.098	.081	.081	.068	.057	.047	.040	.034	.015	.013	.011		
4.0	.127	.098	.077	.109	.085	.067	.075	.059	.047	.043	.035	.028	.014	.011	.009		
5.0	.117	.086	.064	.100	.075	.055	.069	.052	.039	.040	.031	.023	.013	.010	.008		
6.0	.108	.076	.054	.093	.066	.047	.064	.046	.033	.037	.027	.020	.012	.009	.006		
7.0	.101	.068	.046	.087	.059	.040	.060	.042	.028	.035	.025	.017	.011	.008	.006		
8.0	.095	.062	.039	.082	.054	.034	.057	.038	.024	.033	.022	.014	.011	.007	.005		
9.0	.090	.056	.034	.077	.049	.030	.053	.034	.021	.031	.020	.013	.010	.007	.004		
10.0	.085	.052	.030	.073	.045	.026	.051	.032	.019	.030	.019	.011	.010	.006	.004		

C Range: 0 - 360DEG
C Interval: 15.0DEG
Test Speed: HIGH
Temperature:25.3DEG
Operators:Jason
Test Date:2022-01-14

γ Range: 0 - 90DEG
 γ Interval: 0.5DEG
Test System:EVERFINE GO-2000B_V1 SYSTEM V2.0.362
Humidity:58%
Test Distance:8.967m [K=1.0000]
Remarks:

UGR(Unified Glare Rating) Table

Test:U:220.8V I:0.0491A P:10.44W PF:0.9623 Freq:49.99Hz Lamp Flux:813.339x1 lm										
NAME: SL5C-9303010P-WB					TYPE:Downlight			SERIAL No.:		
SPEC.:3000K					DIM.: ϕ 70mm*H150mm					
MFR.: NEKO LIGHTING AG										
ceiling/cavity	0.7	0.7	0.5	0.5	0.3	0.7	0.7	0.5	0.5	0.3
walls	0.5	0.3	0.5	0.3	0.3	0.5	0.3	0.5	0.3	0.3
working plane	0.2	0.2	0.2	0.2	0.2	0.2	0.2	0.2	0.2	0.2
Room dimensions	Viewed crosswise					Viewed endwise				
x = 2H y = 2H	14.7	15.5	15.0	15.7	15.8	14.6	15.4	14.8	15.5	15.7
3H	14.6	15.3	14.8	15.5	15.7	14.4	15.1	14.7	15.3	15.5
4H	14.5	15.2	14.8	15.4	15.6	14.4	15.0	14.6	15.2	15.5
6H	14.4	15.0	14.7	15.3	15.5	14.3	14.9	14.6	15.1	15.4
8H	14.4	15.0	14.7	15.2	15.5	14.2	14.8	14.5	15.1	15.3
12H	14.3	14.9	14.6	15.2	15.4	14.2	14.8	14.5	15.0	15.3
4H 2H	14.6	15.2	14.8	15.5	15.7	14.4	15.1	14.7	15.3	15.5
3H	14.4	15.0	14.7	15.2	15.5	14.3	14.8	14.6	15.1	15.4
4H	14.3	14.8	14.7	15.1	15.4	14.2	14.7	14.5	15.0	15.3
6H	14.2	14.7	14.6	15.0	15.3	14.1	14.5	14.4	14.9	15.2
8H	14.2	14.6	14.5	14.9	15.3	14.0	14.5	14.4	14.8	15.2
12H	14.1	14.5	14.5	14.9	15.3	14.0	14.4	14.4	14.7	15.1
8H 4H	14.2	14.6	14.5	14.9	15.3	14.0	14.5	14.4	14.8	15.2
6H	14.0	14.4	14.5	14.8	15.2	13.9	14.3	14.3	14.7	15.1
8H	14.0	14.3	14.4	14.7	15.2	13.9	14.2	14.3	14.6	15.0
12H	13.9	14.2	14.4	14.6	15.1	13.8	14.1	14.3	14.5	15.0
12H 4H	14.1	14.5	14.5	14.9	15.3	14.0	14.4	14.4	14.7	15.1
6H	14.0	14.3	14.4	14.7	15.2	13.9	14.2	14.3	14.6	15.0
8H	13.9	14.2	14.4	14.6	15.1	13.8	14.1	14.3	14.5	15.0
Variations with the observer position at spacings:										
S = 1.0H	+ 2.4 / - 7.0					+ 2.3 / - 6.2				
1.5H	+ 3.6 / - 4.2					+ 3.5 / - 3.9				
2.0H	+ 4.4 / - 7.1					+ 4.1 / - 6.0				

CIE Pub.117, 813.3 lm Total Lamp Luminous Flux Correct ($8\log(F/F_0) = -0.7$)

C Range: 0 - 360DEG
C Interval: 15.0DEG
Test Speed: HIGH
Temperature:25.3DEG
Operators:Jason
Test Date:2022-01-14

γ Range: 0 - 90DEG
 γ Interval: 0.5DEG
Test System:EVERFINE GO-2000B_V1 SYSTEM V2.0.362
Humidity:58%
Test Distance:8.967m [K=1.0000]
Remarks:

UTILIZATION FACTORS TABLE

Test:U:220.8V I:0.0491A P:10.44W PF:0.9623 Freq:49.99Hz Lamp Flux:813.339x1 lm		
NAME: SL5C-9303010P-WB	TYPE:Downlight	SERIAL No.:
SPEC.:3000K	DIM.: ϕ 70mm*H150mm	
MFR.: NEKO LIGHTING AG		

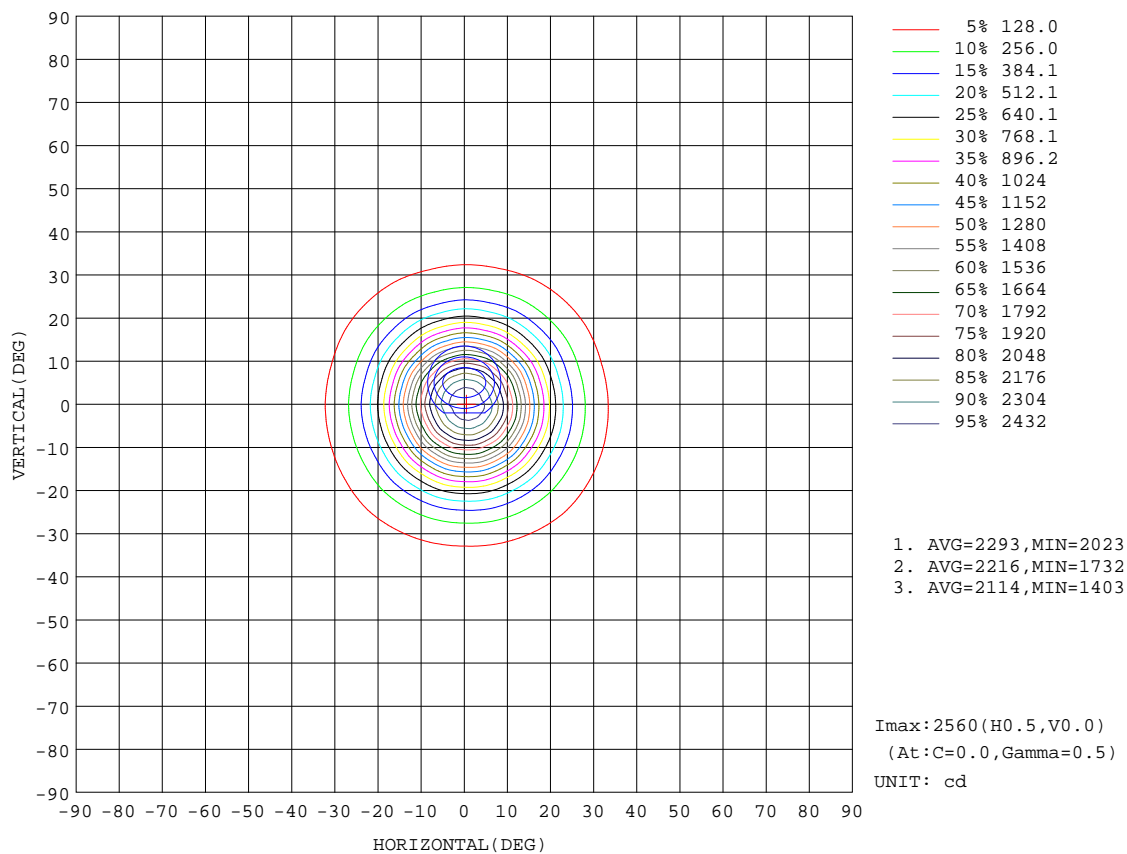
REFLECTANCE										
Ceiling	0.8	0.8	0.8	0.7	0.7	0.7	0.5	0.5	0.5	0
Walls	0.7	0.5	0.3	0.7	0.5	0.3	0.7	0.5	0.3	0
Working plane	0.2	0.2	0.2	0.2	0.2	0.2	0.2	0.2	0.2	0
ROOM INDEX	UTILIZATION FACTORS(PERCENT) $k(RI) \times RCR = 5$									
$k = 0.60$	89	83	79	88	82	79	87	82	79	75
0.80	96	90	87	95	90	87	94	90	86	83
1.00	100	95	92	99	95	91	98	94	91	87
1.25	104	99	96	103	99	96	101	97	95	91
1.50	107	102	99	106	101	99	103	100	97	93
2.00	109	105	102	108	104	101	105	102	100	95
2.50	111	107	104	109	106	103	106	104	101	96
3.00	112	109	106	110	108	105	107	105	103	97
4.00	114	112	109	112	110	108	109	107	105	98
5.00	115	113	111	113	111	110	109	108	107	99
ROOM INDEX	UF(total)									Direct
According to DIN EN 13032-2 2004			Suspended					SHRNOM = 1.25		

C Range: 0 - 360DEG
 C Interval: 15.0DEG
 Test Speed: HIGH
 Temperature:25.3DEG
 Operators:Jason
 Test Date:2022-01-14

γ Range: 0 - 90DEG
 γ Interval: 0.5DEG
 Test System:EVERFINE GO-2000B_V1 SYSTEM V2.0.362
 Humidity:58%
 Test Distance:8.967m [K=1.0000]
 Remarks:

ISOCANDELA DIAGRAM

Test:U:220.8V I:0.0491A P:10.44W PF:0.9623 Freq:49.99Hz Lamp Flux:813.339x1 lm		
NAME: SL5C-9303010P-WB	TYPE:Downlight	SERIAL No.:
SPEC.:3000K	DIM.: ϕ 70mm*H150mm	
MFR.: NEKO LIGHTING AG		



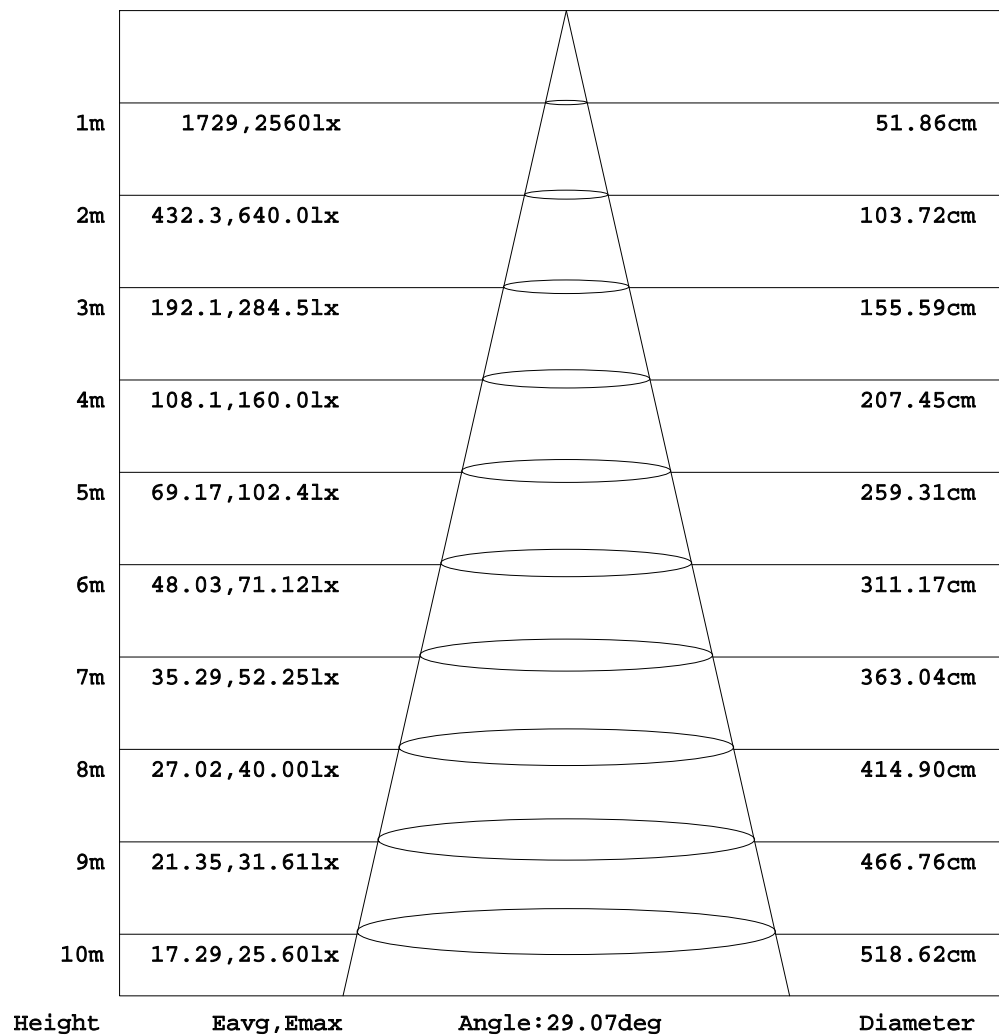
C Range: 0 - 360DEG
C Interval: 15.0DEG
Test Speed: HIGH
Temperature:25.3DEG
Operators:Jason
Test Date:2022-01-14

γ Range: 0 - 90DEG
 γ Interval: 0.5DEG
Test System:EVERFINE GO-2000B_V1 SYSTEM V2.0.362
Humidity:58%
Test Distance:8.967m [K=1.0000]
Remarks:

AAI Figure

Test:U:220.8V I:0.0491A P:10.44W PF:0.9623 Freq:49.99Hz Lamp Flux:813.339x1 lm		
NAME: SL5C-9303010P-WB	TYPE:Downlight	SERIAL No.:
SPEC.:3000K	DIM.: ϕ 70mm*H150mm	
MFR.: NEKO LIGHTING AG		

Flux out:390.0 lm



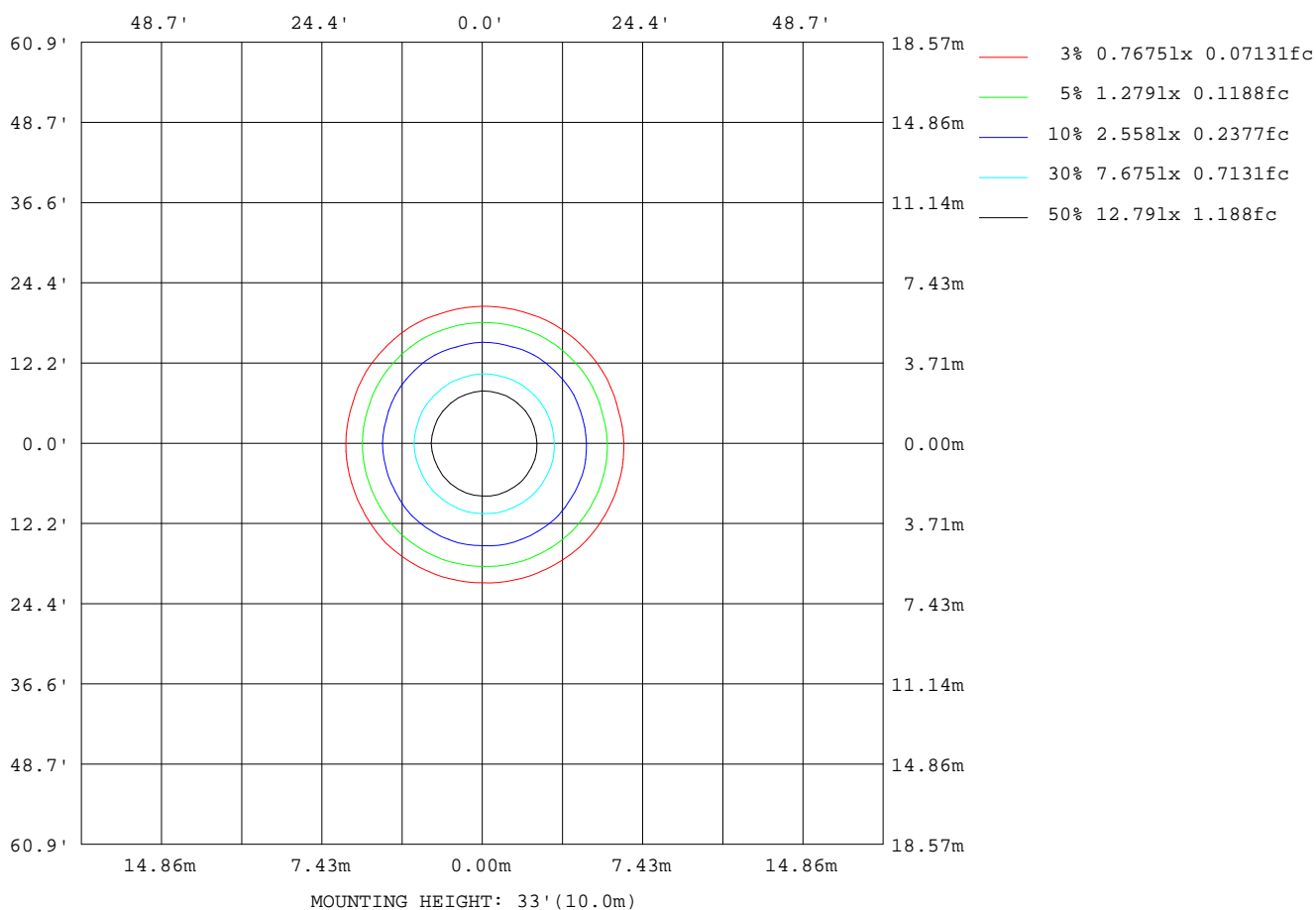
Note:The Curves indicate the illuminated area and the average illumination when the luminaire is at different distance.

C Range: 0 - 360DEG
C Interval: 15.0DEG
Test Speed: HIGH
Temperature:25.3DEG
Operators:Jason
Test Date:2022-01-14

γ Range: 0 - 90DEG
 γ Interval: 0.5DEG
Test System:EVERFINE GO-2000B_V1 SYSTEM V2.0.362
Humidity:58%
Test Distance:8.967m [K=1.0000]
Remarks:

ISOLUX DIAGRAM

Test:U:220.8V I:0.0491A P:10.44W PF:0.9623 Freq:49.99Hz Lamp Flux:813.339x1 lm		
NAME: SL5C-9303010P-WB	TYPE:Downlight	SERIAL No.:
SPEC.:3000K	DIM.: ϕ 70mm*H150mm	
MFR.: NEKO LIGHTING AG		



C Range: 0 - 360DEG
C Interval: 15.0DEG
Test Speed: HIGH
Temperature:25.3DEG
Operators:Jason
Test Date:2022-01-14

γ Range: 0 - 90DEG
 γ Interval: 0.5DEG
Test System:EVERFINE GO-2000B_V1 SYSTEM V2.0.362
Humidity:58%
Test Distance:8.967m [K=1.0000]
Remarks:

LED Avg.L Report

Test:U:220.8V I:0.0491A P:10.44W PF:0.9623 Freq:49.99Hz Lamp Flux:813.339x1 lm		
NAME: SL5C-9303010P-WB	TYPE:Downlight	SERIAL No.:
SPEC.:3000K	DIM.: ϕ 70mm*H150mm	
MFR.: NEKO LIGHTING AG		

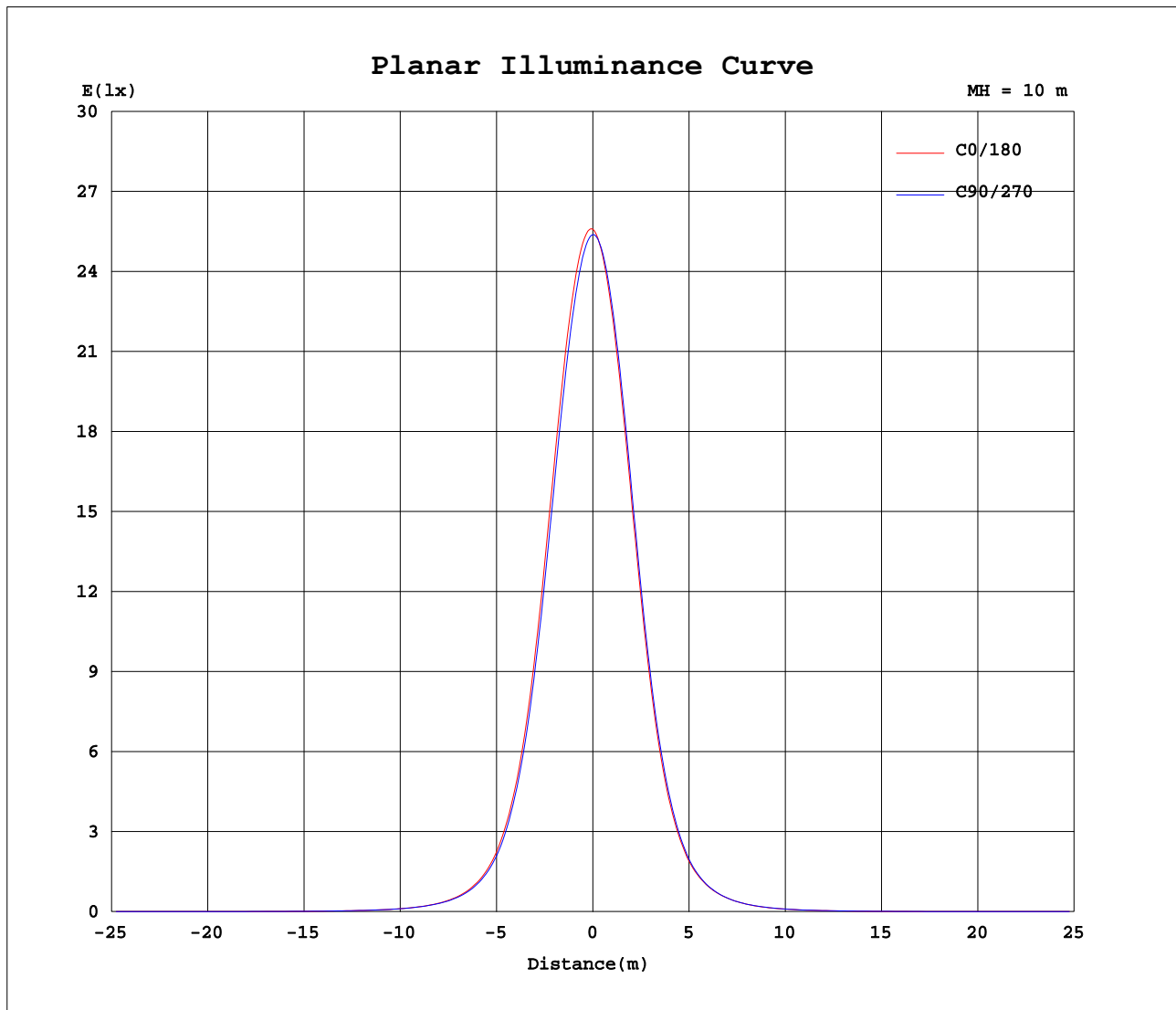
AvgL	cd/m2
L_0~180 (65) av	356
L_0~180 (75) av	21
L_0~180 (85) av	39
L_90~270 (65) av	775
L_90~270 (75) av	18
L_90~270 (85) av	39
L_45 (65) av	1280
L_45 (75) av	9
L_45 (85) av	19

Standard: GB/T 29293-2012

C Range: 0 - 360DEG
C Interval: 15.0DEG
Test Speed: HIGH
Temperature:25.3DEG
Operators:Jason
Test Date:2022-01-14

γ Range: 0 - 90DEG
 γ Interval: 0.5DEG
Test System:EVERFINE GO-2000B_V1 SYSTEM V2.0.362
Humidity:58%
Test Distance:8.967m [K=1.0000]
Remarks:

Planar Illuminance Curve



C Range: 0 - 360DEG
C Interval: 15.0DEG
Test Speed: HIGH
Temperature: 25.3DEG
Operators: Jason
Test Date: 2022-01-14

γ Range: 0 - 90DEG
 γ Interval: 0.5DEG
Test System: EVERFINE GO-2000B_V1 SYSTEM V2.0.362
Humidity: 58%
Test Distance: 8.967m [K=1.0000]
Remarks:

```

γ Range: 0 - 90DEG
γ Interval: 0.5DEG
Test System:EVERFINE GO-2000B_V1 SYSTEM V2.0.362
Humidity:58%
Test Distance:8.967m [K=1.0000]
Remarks:

```

```

γ Range: 0 - 90DEG
γ Interval: 0.5DEG
Test System:EVERFINE GO-2000B_V1 SYSTEM V2.0.362
Humidity:58%
Test Distance:8.967m [K=1.0000]
Remarks:

```